

Canadian Queen Elizabeth II Diamond Jubilee Scholarships (QES)

Program Guidelines April 2024



Call Overview

The *Canadian Queen Elizabeth II Diamond Jubilee Scholarships* program (QES) was created to improve global talent exchange between Canada and other nations. The program aims to develop the next generation of innovative leaders and community builders by providing enriched academic, professional, and cross-cultural experiences and by facilitating lasting local and global community engagement.

2025 Competition

Thanks to funding from the Rideau Hall Foundation, QES 2025 will support projects that focus on the adaptation, response, and resilience to a changing climate.

This includes (but is not limited to) projects focused on biodiversity; agriculture; energy; climate and public health; economic impacts of climate change; air quality; community resilience; education; ecosystems; and water quality.

Canadian postsecondary institutions that are members of Universities Canada or Colleges and Institutes Canada are invited to submit multi-year project proposals seeking funding of up to \$300,000 CAD.

Each Canadian postsecondary institution may submit one proposal to the competition. Approximately \$6,000,000 CAD is available through this competition.

Priority will be given to projects that focus on diversity and inclusion and result in a strengthened impact to local and global communities by young leaders.

Summary of project criteria

- Canadian postsecondary institutions that are members of Universities Canada or Colleges and Institutes Canada may submit a proposal to the QES program.
- Canadian postsecondary institutions may partner on a joint proposal; however, each institution may be the lead applicant on only one submission. There is no limit to the number of submissions that an institution can partner on.
- Projects will support international study, research, or internships for Canadian students and/or scholarships for incoming international graduate students to study or do research. Graduate students refer to those enrolled in a master's, PhD, or other post-graduate program. Post-graduate programs require a post-secondary diploma or bachelor's degree as a prerequisite.

Key dates

June 7, 2024 at 5:00 pm eastern: deadline for submission.

Mid-September 2024: applicants will be notified of the competition results.

January 1, 2025: approved project activities anticipated to begin.

December 31, 2028: all project activities end.

February 28, 2029: final project reports must be submitted.

Proposal requirements

1. Complete the application form.
2. Upload the **completed budget form**.
3. Upload the **letter(s) of support** from the partner organization(s).

For all inquiries, please contact

Matt Henderson

qes2025@univcan.ca

Canadian Queen Elizabeth II Diamond Jubilee Scholarships (QES)

Program Guidelines April 2024



- All QES funded activities must be for academic credit/recognition.
- Proposals must demonstrate a partnership between a Canadian postsecondary institution and a partner institution/organization in at least one of the eligible countries (see **Annex B**).
- The program will require all scholars to participate in leadership development, networking, and community engagement activities.

Table of contents

Glossary of terms.....	4
1.0 Program overview	5
1.1 QES governance.....	6
2.0 QES 2025.....	6
2.1 QES program objectives and expected outcomes.....	7
2.2 Program design.....	7
2.3 Program targets.....	8
2.4 Eligibility.....	8
2.4.1 Eligible institutions.....	8
2.4.2 Partnerships.....	8
2.4.3 Cost-sharing.....	8
3.0 General criteria.....	9
3.1 Project specific criteria	9
3.1.1 Awards for Canadian students	9
3.1.2 Scholarships for international students	11
3.2 Leadership and community engagement.....	11
3.3 Creating a community of Queen Elizabeth Scholars	12
3.4 Reporting and evaluation	12
4.0 Application process	12
5.0 Selection process	13
5.1 Selection criteria	13
6.0 Privacy Policy	14
7.0 Contact us.....	15
Annex A: Logic Model	16
Annex B: Eligible countries	17
Annex C: Eligible expenses for incoming international scholars	18

Glossary of terms

The following terms are specific to the QES 2025 call for proposals.

Term	Definition
Academic diplomacy	<p>Academic diplomacy refers to the opportunity we create for greater cooperation across national and cultural borders when we centre learning and research as the purpose of our interactions. This sort of exchange is not limited to any singular field of study, industry or even geography. It is based on the belief that learning is a shared exercise that has the power to bring people together and achieve more than the sum of our parts.</p> <p>Academic diplomacy is the impact of the project activities that carries benefits beyond academia and across individuals and communities.</p>
Academic credit/recognition	<p>All students must receive academic credit/recognition for the successful completion of their QES funded activities. How the credit/recognition is attributed is to be determined by the Canadian postsecondary institution.</p> <p>Possibilities include specific course credit, directed reading, co-curricular, and work-integrated learning credit. In the case of incoming scholars undertaking short-term study or research, QES funded activities must be directly linked to the graduate program in which they are registered in their home country.</p>
Outbound scholars	<p>Eligible students enrolled at a postsecondary institution that is a member of Universities Canada or Colleges and Institutes Canada. Outbound scholars must be Canadian citizens or permanent residents.</p> <p>Eligible outbound scholars:</p> <ul style="list-style-type: none"> • University students who have completed at least two years of their undergraduate program requirements or are enrolled in a graduate program. • College, CEGEP, polytechnic, or institute of technology students who have completed at least one year of their credential program requirements or are enrolled in a graduate program. <p>Graduate programs include master’s, PhD, and other post-graduate programs that require a diploma or bachelor’s degree as a prerequisite.</p> <p>Scholars must be travelling to an eligible country to study, do research or undertake an internship. Those who have previously received QES funding are not eligible.</p>
Inbound scholars	<p>Graduate students, who are citizens of an eligible country, coming to Canada to study or conduct research at a Canadian postsecondary institution and who have not previously received QES funding.</p>

Canadian Queen Elizabeth II Diamond Jubilee Scholarships (QES)

Program Guidelines April 2024



	Graduate students refer to those enrolled in a master’s, PhD, or other post-graduate program. Post-graduate programs require a post-secondary diploma or bachelor’s degree as a prerequisite.
Internship	An opportunity for Canadian students to gain practical or professional skills. Often referred to as experiential learning or work-integrated learning. Internships may be paid or voluntary positions.
Partnerships	<p>Projects must include a partnership between one (or more) Canadian postsecondary institution and one (or more) institution/organization in one (or more) of the eligible countries.</p> <p>Projects may build on existing partnerships, but funding may also be used to establish new partnerships.</p> <p>Partner institutions/organizations may include non-governmental organizations (NGO), civil society organizations, policy institutes, postsecondary institutions, research institutes, UN agencies, and national and local governments.</p>
Postsecondary, partner, and student contributions	<p>The cash, in-kind and leveraged contributions provided by the postsecondary institution, the partner institution/organization and/or student may include:</p> <ul style="list-style-type: none"> • Tuition paid by the students, tuition waivers or discounts; other discounts or waivers for academic, living or travel costs. • Supervisory time; researcher salaries and/or research assistant stipends; publication costs; communication costs; technical costs; conference registration fees; costs for organizing an academic event/conference; and interpretation. <p>The partner institutions/organizations may also contribute toward airfare, ground transportation, per diems, and/or financial contributions from other sources, including foundations, community partners, industry partners and other funding agencies.</p> <p>Overhead costs are not considered an eligible contribution.</p>
QEScholar	<p>The name given to Canadian or international participants of a QES project when their funded activity begins.</p> <p>The term is used to describe active participants as well as alumni.</p>

1.0 Program overview

Launched in 2014, QES has activated a dynamic community of young global leaders that have created lasting impacts at home and abroad. The program has achieved this through international education/experiences, providing opportunities for discovery and inquiry, and enabling professional skills development.

Scholarship recipients, called “Queen Elizabeth Scholars”, engage with communities, learn about cultures, and create projects and actions that impact the world. They are part of a global network of Queen Elizabeth Scholars who share knowledge, exchange ideas, and collaborate on meaningful initiatives.

Canadian Queen Elizabeth II Diamond Jubilee Scholarships (QES)

Program Guidelines April 2024



With the help of many generous benefactors, Queen Elizabeth Scholars are the next generation of innovators, entrepreneurs, inventors, and leaders.

The QES program has provided funding to 112 projects administered by 47 Canadian institutions and has over 2,500 scholars in its network.

Please visit www.queenelizabethscholars.ca/qescholars/ to learn more about QES.

1.1 QES governance

QES is managed through a unique partnership of the Rideau Hall Foundation (RHF), Universities Canada, and Canadian postsecondary institutions. The roles and responsibilities of each are as follows:

- *Rideau Hall Foundation* stewards partnerships; acts as the financial trustee; administers the program with technical support from Universities Canada; manages alumni engagement; and leads strategic communication, branding and web presence.
- *Universities Canada* is the technical lead; launches and manages calls for proposals; monitors and evaluates progress towards results; reports on activities with recommendations for improvement; and participates in strategic communications, branding, and web presence.
- *Canadian postsecondary institutions* develop and manage projects; contribute and leverage financial funding; organize leadership, networking, and community engagement activities; select and support scholars before, during and after their award; and report on activities to Universities Canada.

2.0 QES 2025

Thanks to funding from the Rideau Hall Foundation, QES 2025 is the seventh call for proposals of the program. QES 2025 builds on the success of the program by funding opportunities for Canadian students to study, do research, or undertake internships abroad, as well as funding Canadian-based study/research for international students. The eligibility requirements have been expanded in QES 2025 to include Canadian universities, colleges, CEGEPs, polytechnics, and institutes of technology.

QES 2025 will support projects that focus on the adaptation, response, and resilience to a changing climate, while enhancing academic diplomacy.

This includes (but is not limited to) projects focused on biodiversity; agriculture; energy; climate and public health; economic impacts of climate change; air quality; community resilience; education; ecosystems; and water quality.

Priority will be given to project proposals that focus on diversity and inclusion and result in a strengthened impact to local and global communities by young leaders.

QES follows a project-based design, with Canadian postsecondary institutions managing the scholar recruitment, application and selection process, pre-departure/arrival briefings, and ongoing monitoring and support of scholars. Institutions are also responsible for providing leadership development, networking, and community engagement opportunities.

Canadian Queen Elizabeth II Diamond Jubilee Scholarships (QES)

Program Guidelines April 2024



Funding available:

Component	Duration*	QES contribution**
Outbound Canadian students (Canadian citizens or permanent residents) who undertake study, research, or internship abroad	Minimum: 60 days	QES will contribute up to: \$8,000 for awards of 60 - 89 days. \$10,000 for awards of 90 - 120 days. \$12,000 for awards of 121 - 180 days. \$13,000 for awards over 181 days
Incoming International students to study or conduct research at a Canadian postsecondary institution	Minimum: 60 days	See Annex C for the list of eligible expenses

* Travel time and orientation/briefings are not included in the minimum required duration. Individuals that do not meet the minimum duration are not eligible for funding.

**These funds may be leveraged by additional sources, including from the postsecondary institution, the partner institution/organization, and/or the student.

2.1 QES program objectives and expected outcomes

The objectives of the QES program are to:

1. Develop global citizens through enriched academic, professional, and cross-cultural experiences.
2. Foster a new generation of enterprising leaders in Canada and around the world through facilitating lasting local and global community engagement.
3. Enhance collaborative capacity and deepen peer relationships among Queen Elizabeth Scholars to enrich the program experience and facilitate personal and professional growth.

The expected outcomes of the program are:

1. Increased knowledge and skills through academic and professional experiences of young global leaders.
2. Enhanced networking between Canadians and emerging global leaders.
3. Strengthened impact to local and global communities by young leaders.

2.2 Program design

QES 2025 will fund multi-year projects that comprise of one or more of the following components:

- Scholarships for Canadian students to study, do research or undertake an internship in one of the eligible countries.

Canadian Queen Elizabeth II Diamond Jubilee Scholarships (QES)

Program Guidelines April 2024



- Scholarships for international graduate students from one of the eligible countries to study or conduct research at a Canadian postsecondary institution. This may include short term study or a full graduate or post-graduate program.

As part of their project, Canadian postsecondary institutions will be required to connect their Queen Elizabeth Scholars and provide them with leadership, networking, and community engagement opportunities. Canadian institutions will also be encouraged to contribute and leverage additional funding to support their Queen Elizabeth Scholars.

2.3 Program targets

The QES program is targeting an overall participation rate of:

- 75% outbound Canadian students.
- 25% inbound international students.

These targets will be evaluated at the program level. Individual proposals are not bound by this target.

Proposals can be entirely focused on outbound Canadian students, inbound international students, or a combination of both.

QES 2025 will target a reasonable overall gender balance of Queen Elizabeth Scholars. The program will also aim to achieve an appropriate balance of geography.

QES 2025 will aim to award 50% of the total available funding to university-led projects and 50% of the total available funding to college, CEGEP, polytechnic, and institute of technology-led projects.

2.4 Eligibility

2.4.1 Eligible institutions

Canadian postsecondary institutions that are members of Universities Canada or Colleges and Institutes Canada. Canadian postsecondary institutions may partner on a joint proposal; however, each institution may be the lead applicant on only one submission.

2.4.2 Partnerships

Projects may build on existing partnerships between Canadian postsecondary institutions and international partners, but funding may also be used to establish new relationships.

2.4.3 Cost-sharing

To be considered for funding, applicants must demonstrate that the Canadian postsecondary institution will contribute to project costs. Contributions may include in-kind contributions such as administrative costs; cash contributions; tuition waivers or discounts; other discounts or waivers for academic, living or travel costs; and financial contributions from other sources including foundations, placement partners and other funding agencies.

Canadian Queen Elizabeth II Diamond Jubilee Scholarships (QES)

Program Guidelines April 2024



While there is no minimum required contribution for each submission, a higher proportional contribution will be viewed more favorably by the selection committee.

3.0 General criteria

All projects must meet the following general criteria:

- Must focus on the adaptation, response, and resilience to a changing climate, while enhancing academic diplomacy.
- Priority will be given to proposals that focus on diversity and inclusion and result in a strengthened impact to local and global communities by young leaders.
- *Project implementation period:* It is anticipated that project activity will commence as early as January 1, 2025, subject to the signing of a Contribution Agreement between Rideau Hall Foundation and the successful Canadian postsecondary institution. All project activities must be completed by December 31, 2028, and final reports must be submitted by February 28, 2029.
- *Knowledge sharing:* Canadian postsecondary institutions are expected to participate in knowledge sharing activities throughout the program implementation period to impart insights and learnings from the project with other institutions.
- *Funding:* Canadian postsecondary institutions may seek up to \$300,000 in funding from QES 2025. Funding is available to support outbound Canadian students as well as inbound international students undertaking studies or conducting research. There is no limit to the number of scholars that can be included in a project. An activity fund of \$2,000 per scholar may be included in the project budget to support institution-led leadership development, networking, and community engagement activities and/or other project administration requirements. Please see **Annex C** for eligible QES expenses for incoming international students.
- *Cost-sharing:* The QES program aims for a significant contribution from Canadian postsecondary institutions and their partners. While there is no minimum required contribution, applications that contribute/leverage funding for projects costs will be viewed more favorably by the selection committee.
- *Geographic focus:* Please see **Annex B** for a list of eligible countries.
- *Program outcomes:* Projects must align with the QES program's outcomes, as per the logic model in **Annex A**.

3.1 Project specific criteria

3.1.1 Awards for Canadian students

This component will award funding for Canadian students to study, conduct research, or undertake an internship for a minimum of 60 days (excluding travel days and briefings/orientations) in one of the eligible countries.

Student eligibility:

- Students must not have previously received QES funding.

Canadian Queen Elizabeth II Diamond Jubilee Scholarships (QES)

Program Guidelines April 2024



- Students must be Canadian citizens or permanent residents.
- Students must be 35 years of age or under at the time of application. Under exceptional circumstances, a request for exemption may be considered.
- Students must be registered at a Canadian postsecondary institution that is a member of Universities Canada or Colleges and Institutes Canada.
- Students attending a university must be enrolled in the third or fourth year of their undergraduate program or enrolled in a graduate program.
- Students attending a college, CEGEP, polytechnic or institute of technology must be enrolled in the second, third, or fourth year of their program or enrolled in a graduate program.
- Students must be able to communicate in at least one of the languages used by the partner organization/institution.

Academic credit/recognition:

- All QES funded activities must be for academic credit/recognition (see glossary of terms).

Eligible countries:

- QES funded activities must take place outside of Canada. Please refer to **Annex B** for the list of eligible countries.
- Activities will not be permitted in countries (or regions within countries) with travel advisories from the Government of Canada that recommends the avoidance of all travel or of non-essential travel. Please refer to this link for more information: <http://travel.gc.ca/travelling/advisories>.

Partner institutions/organizations:

- Partner institutions/organizations in participating countries may include postsecondary institutions, research institutes, non-governmental organizations, civil society organizations, UN agencies, policy institutes and national and local governments. In the case of internships, postsecondary institutions may permit students to work in the private/commercial sector (but limited to small and medium-sized enterprises) if the internship is well justified and contributes to the objectives of the proposal and QES program.
- Canadian postsecondary institutions must ensure that interns comply with all relevant employment and immigration legislation in the host country.

Duration:

- Participants must spend a minimum of 60 days with their local partners. The 60 days does not include travel days or any in-country briefings/orientation. It is expected that students will undertake the funded activity for at least 35 hours per week.

Funding:

- Students are eligible to receive up to \$8,000 for 60–89-day awards, \$10,000 for 90–120-day awards, \$12,000 for 121–180-day awards and up to \$13,000 for awards of 181 days or more, at the discretion of the Canadian postsecondary institution. These funds may be leveraged by additional sources from the institution, students and/or partners.

3.1.2 Scholarships for international students

This component will award funding for international graduate students from eligible countries to undertake studies or research at a Canadian postsecondary institution for a minimum of 60 days (excluding travel days and briefings/orientations).

This may include short-term study or research or full graduate programs.

Student eligibility:

- Students must not have previously received QES funding.
- Students must be a citizen of an eligible country (**see Annex B**). Anyone who has applied for Canadian citizenship or for permanent residency is not eligible.
- Students currently in Canada with a valid study permit are eligible, if the award does not jeopardize their admission or their Immigration, Refugees and Citizenship Canada status.
- Students must be 35 years of age or under at the time of application. Under exceptional circumstances, a request for exemption may be considered.
- Students may undertake studies or do research.
- Students must be proficient in the language of instruction at the Canadian postsecondary institution, either English or French.

Academic credit/recognition:

- All QES funded activities must be for academic credit/recognition (see glossary of terms).

Duration:

- The scholarships will be awarded for a minimum of 60 days at the Canadian postsecondary institution, excluding travel/orientation days. Scholars must be in good academic standing for the award to be maintained.

Residence:

- Scholars must reside in Canada throughout the period of study or research and commit to their studies/research on a full-time basis while at the Canadian postsecondary institution.

Funding for scholars:

- Scholarship funds can contribute towards tuition, accommodation, visa expenses, health insurance, international airfare (economy; most direct route), local transport in Canada from/to the airport, and other allowable expenses. See **Annex C** for eligible expenses.

3.2 Leadership and community engagement

The program will require all scholars to participate in leadership development and community engagement activities during their award.

The Canadian postsecondary institution will be required to:

Canadian Queen Elizabeth II Diamond Jubilee Scholarships (QES)

Program Guidelines April 2024



- Provide each scholar with leadership development activities.
- Help each scholar identify community engagement activities, either in Canada or abroad (in the case of Canadian students).
- Engage program alumni with current scholars before, during and after their award.
- Incorporate alumni feedback to enhance the program experience.
- Enable ongoing peer mentoring and alumni interaction.

Community engagement activities may include but are not limited to:

- Volunteering within the local community.
- Participating in community events, such as roundtables and panel discussions.
- Peer mentoring, knowledge sharing.
- Strengthening character and professional skills through public speaking, problem-solving, and leadership activities.
- Applying global experiences or knowledge to enhance the local community.

3.3 Creating a community of Queen Elizabeth Scholars

QES seeks to create a community of young global leaders who are interacting and learning from each other before, during and after the program. This community will enrich the program experience through enhancing collaborative capacity and deepening peer relationships among both alumni and current participants of the program. Scholars will join the dynamic network of Queen Elizabeth Scholars which is active at the campus, national, and global levels and largely supported through social media. Scholars and alumni will be encouraged to use all social media platforms to share their QES experience with each other and with the public.

Canadian postsecondary institutions will be encouraged to use the hashtag #QEScholars in social media posts related to the program and scholars will be asked to do the same. QES is active on Instagram ([@QEScholars](#)) and on X ([@QEScholars](#)).

3.4 Reporting and evaluation

QES requires Canadian postsecondary institutions to submit an initial workplan (narrative and financial), annual narrative reports, as well as twice yearly financial reports (templates will be provided). Each scholar will be required to complete a pre-departure form (PDF) as well as a scholar narrative report (SNR). Canadian postsecondary institutions and scholars will be required to participate in a program evaluation process which may involve surveys, interviews and both summative and formative evaluations.

Universities Canada, on behalf of the Rideau Hall Foundation will send successful applicants a Contribution Agreement outlining the roles and responsibilities, reporting requirements, and payment schedule.

4.0 Application process

Project proposals must be submitted online in English or French via the QES 2025 Portal (https://portal.scholarshippartners.ca/welcome/qes_en/) Users will be required to register an account and complete their profile before being able to access the application form.

Please note it may take up to 48 hours to register an account. We encourage you start this process early in the application period.

Canadian Queen Elizabeth II Diamond Jubilee Scholarships (QES)

Program Guidelines April 2024



In order to register an account, please follow these steps:

1. Navigate to: https://portal.scholarshippartners.ca/welcome/qes_en/
2. Click on the Registration button.
3. Complete the Registration form and click “submit”.
4. You will receive an email with a link to activate your account.
5. Click on the link in the email and follow the instructions to change your password.
6. You will be redirected to your portal account and can now apply.

If you are a coordinator of a current QES project, you can access the application form via your portal access. When you log into your account, you will see a new link at the top of the page called “QES 2025 Call for Proposals”. You will be able to switch between portals by clicking on the different links at the top of the page.

To be considered, the following steps must be completed before the deadline:

1. Fill out the online application form;
2. Fill out and submit the budget form;
3. Upload the letter(s) of support from the partner organization; and
4. Submit the application.

Universities Canada will acknowledge receipt of all complete applications. Late or incomplete proposals, and proposals that do not meet the project criteria will not be forwarded to the selection committee.

5.0 Selection process

A two-stage selection process will include the review of all complete and eligible proposals received by the deadline and will include an arms-length selection committee of Canadian and other country representatives from the academic, private, public, and not-for-profit sectors. There will be two distinct selection committees: one for university-led proposals one for college, CEGEP, polytechnic and institute of technology-led proposals.

The selection committee will assess proposals by applying the selection criteria listed below. Proposals may be accepted, rejected, or provided conditional approval. It may also be possible that only certain components or elements of a proposal are approved for funding.

The selection process will ensure that gender balance and geographic balance is considered.

Proposals will be recommended to the Rideau Hall Foundation for approval. Results are expected to be e-mailed to applicants in mid-September.

Successful Canadian post secondary institutions will enter into a Contribution Agreement with the Rideau Hall Foundation and projects may begin as early as January 1, 2025, if the Contribution Agreement is fully executed.

5.1 Selection criteria

The selection committee will use the criteria outlined below to assess proposals. Each criterion is weighted.

A. Project feasibility and alignment with QES objectives (30%)

- The extent to which the project contributes to the objectives of the QES program.
- The extent to which the proposed activities support projects focused on the adaptation, response, and resilience to a changing climate.
- The extent to which the objectives, results and activities for the project are clear, realistic, and achievable.
- The extent to which the proposed activities focus on diversity and inclusion.
- The extent to which the proposed activities strengthen impact to local and global communities by young leaders.

B. Likelihood of Success (25%)

- The soundness of the proposed project management approach and methodology.
- The extent to which the Canadian postsecondary institution is able to support Queen Elizabeth Scholars through program activities such as pre-departure preparation, reintegration and ongoing mentoring. This would include QES specific activities which will foster a sense of belonging to the QES.
- The level of experience of the Canadian postsecondary institution in working on projects of similar complexity and scope.
- The extent to which potential risks and mitigation strategies have been well identified.

C. Leadership development, networking, community and alumni engagement including social media (25%)

- The extent to which the proposal demonstrates an effective plan for leadership development.
- The extent to which the proposal demonstrates an effective plan for community engagement.
- The extent to which the proposal demonstrates an effective plan for alumni engagement.
- The extent to which the proposal offers a specific plan to allow QEScholar networking to take place before, during and after the award.

D. Value for money (20%)

- The extent to which the cost-effectiveness of the budget is justified given the proposed scope of activities and expected results proposed.
- The extent to which the level and feasibility of the proposed financial contribution from the postsecondary institution and others has been clearly identified. A higher proportional contribution will be viewed favorably by the selection committee.

6.0 Privacy Policy

Information collected through this call for proposals will be securely stored in accordance with Universities Canada's Privacy Policy and used solely for the purposes of administering the call and subsequent funding.

Information collected will be shared with QES program staff, selection committee members, contracted system administrators and Rideau Hall Foundation, for the purposes of program administration and evaluation.

Universities Canada will retain the information provided in the application in one of three ways:

Canadian Queen Elizabeth II Diamond Jubilee Scholarships (QES)

Program Guidelines April 2024



1. Unsubmitted applications will be deleted from the system after two years of inactivity.
2. Personal information on unsuccessful applications will have personal identifiers pseudonymized after two years of inactivity.
3. Personal information on successful applications where the recipient has received funding will be pseudonymized after seven years of inactivity.

Universities Canada will retain a permanent repository of pseudonymized data related to #2 and #3 above for any given year for statistical purposes.

Applicants will be able to address a challenge concerning compliance by Universities Canada with this policy to the Privacy Officer. Universities Canada will investigate all complaints within 30 days of receipt. If a complaint is found to be justified, Universities Canada will take appropriate measures, including amending its policies and procedures if necessary.

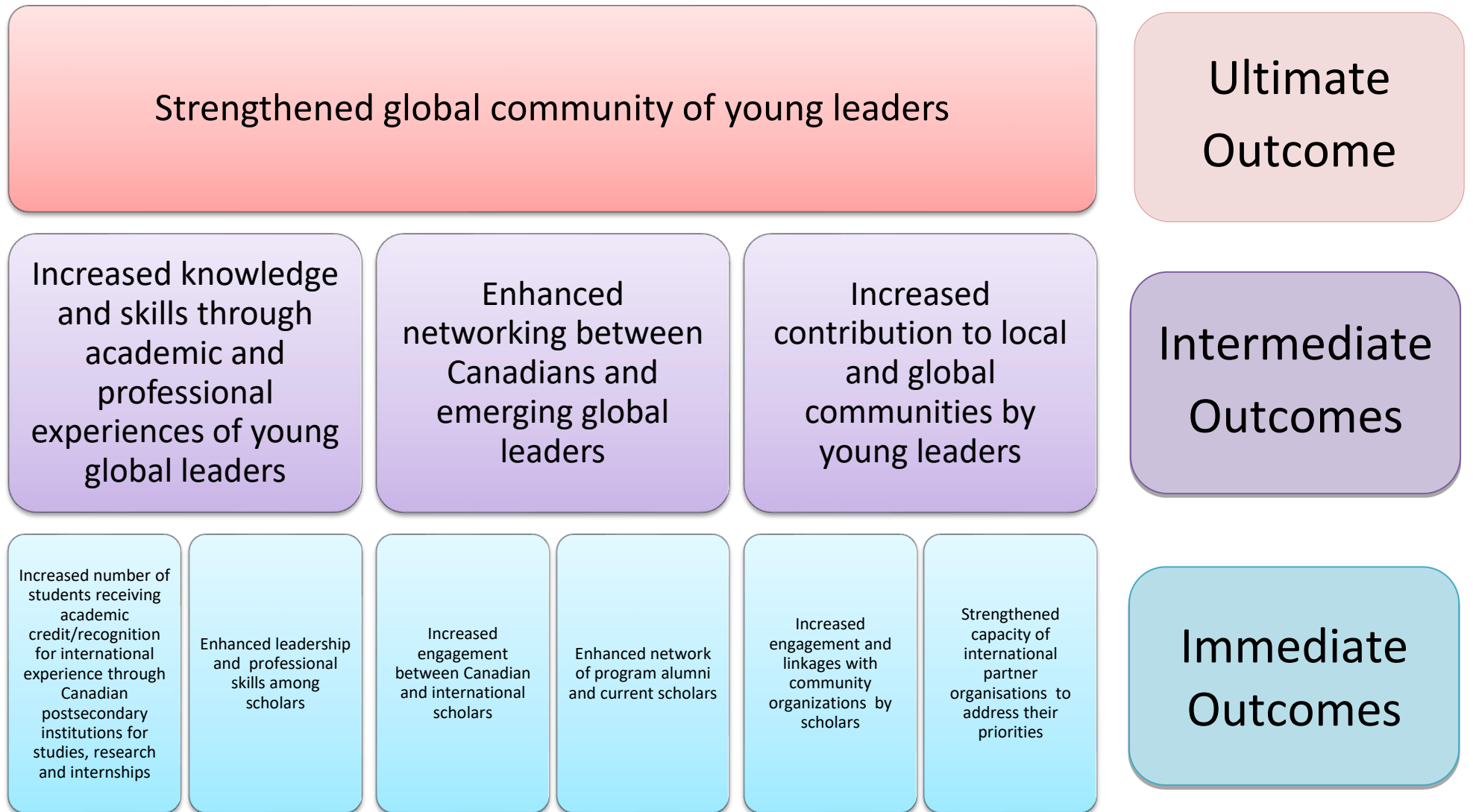
To obtain more information on Universities Canada's privacy practices, or to make a complaint, please contact privacy@univcan.ca.

7.0 Contact us

Universities Canada will respond to all email inquiries to qes2025@univcan.ca within two working days if received by **June 3, 2024**.

The last update to the FAQ page will be on June 5, 2024. Visit the [FAQ](#) page.

Annex A: Logic Model



Canadian Queen Elizabeth II Diamond Jubilee Scholarships (QES)

Program Guidelines April 2024



Annex B: Eligible countries

Below is the list of countries eligible for funding in the QES 2025 call for proposals. Successful projects will need to abide by [travel advisories issued by the Government of Canada](#) recommending the avoidance of all travel or non-essential travel.

<p>A Afghanistan Algeria Angola Antigua and Barbuda Argentina Australia</p> <p>B Bangladesh Barbados Belize Benin Bermuda Bhutan Bolivia Botswana Brazil Brunei Darussalam Burkina Faso Burundi</p> <p>C Cabo Verde Cambodia Cameroon Central African Republic Chad Chile China (People's Republic of) Colombia Comoros Congo Cook Islands Costa Rica Cote d'Ivoire Cuba</p> <p>D Democratic Republic of the Congo Djibouti Dominica Dominican Republic</p>	<p>E-F Ecuador Egypt El Salvador Equatorial Guinea Eritrea Eswatini Ethiopia Fiji</p> <p>G Gabon Gambia Ghana Grenada Guatemala Guinea Guinea-Bissau Guyana</p> <p>H Haiti Honduras</p> <p>I India Indonesia Iran Iraq</p> <p>J Jamaica Jordan</p> <p>K Kenya Kiribati</p> <p>L Lao People's Democratic Republic Lebanon Lesotho Liberia Libya</p>	<p>M Madagascar Malawi Malaysia Maldives Mali Marshall Islands Mauritania Mauritius Mexico Micronesia Mongolia Montserrat Morocco Mozambique Myanmar</p> <p>N Namibia Nauru Nepal New Zealand Nicaragua Niger Nigeria Niue</p> <p>P Pakistan Palau Panama Papua New Guinea Paraguay Peru Philippines</p> <p>R-S Rwanda Saint Helena Saint Lucia Saint Vincent and the Grenadines Samoa Sao Tome and Principe Senegal Seychelles</p>	<p>Sierra Leone Singapore Solomon Islands Somalia South Africa South Sudan Sri Lanka St. Kitts and Nevis Sudan Suriname Syrian Arab Republic</p> <p>T Tanzania Thailand The Bahamas Timor-Leste Togo Tokelau Tonga Trinidad and Tobago Tunisia Turks and Caicos Tuvalu</p> <p>U Uganda United Kingdom Uruguay</p> <p>V Vanuatu Venezuela Vietnam</p> <p>W Wallis and Futuna West Bank and Gaza Strip</p> <p>Y-Z Yemen Zambia Zimbabwe</p>
---	---	---	--

Canadian Queen Elizabeth II Diamond Jubilee Scholarships (QES)

Program Guidelines April 2024



Annex C: Eligible expenses for incoming international scholars

Eligible expenses* for long-term** training programs	
<p><i>* Each international scholar funded by QES must receive a monthly living allowance and be covered by health insurance as per individual postsecondary institution's requirements. All other expenses are eligible but not mandatory.</i></p>	
<p><i>** refers to training programs that lasts for more than 12 months</i></p>	
Canadian Visa	<ul style="list-style-type: none"> ● all costs involved, based on original receipts
Tuition	<ul style="list-style-type: none"> ● all costs involved
International air transportation	<ul style="list-style-type: none"> ● Economy class (return ticket) between international airport in home country and final destination in Canada ● original air ticket and boarding passes required as receipts
Winter clothing allowance	<ul style="list-style-type: none"> ● up to \$350, one-time lump sum, no receipts required other than proof funds were given to student
Installation allowance	<ul style="list-style-type: none"> ● up to \$600 one-time lump sum, no receipts required other than proof funds were given to student
Monthly living allowance	<ul style="list-style-type: none"> ● as determined by the postsecondary institution
Medical plan	<ul style="list-style-type: none"> ● health care plan as mandated by the institution
Books	<ul style="list-style-type: none"> ● \$600/academic year, or \$300/term (+\$50/course for summer session), no receipts required other than proof funds were given to student
Other expenses related to full master's or post-graduate programs	<ul style="list-style-type: none"> ● maximum \$3,000 for the entire program, <u>with receipts</u> and can include expenses related to computer purchase, conference participation, Technical and Vocational Education and Training (TVET), research in home country etc.
Other expenses related to full PhD programs	<ul style="list-style-type: none"> ● maximum \$5,000 for the entire program, <u>with receipts</u> and can include expenses related to computer purchase, conference participation, research in home country etc.

Canadian Queen Elizabeth II Diamond Jubilee Scholarships (QES)

Program Guidelines April 2024



Eligible expenses* for short-term** training programs	
<p><i>* Each international scholar funded by QES must receive a monthly living allowance and be covered by health insurance as per individual postsecondary institution's requirements. <u>All other expenses are eligible but not mandatory</u></i></p>	
<p><i>** refers to training programs that lasts up to 12 months</i></p>	
Canadian Visa	<ul style="list-style-type: none"> • all costs involved, based on original receipts
Tuition	<ul style="list-style-type: none"> • all costs involved
International air transportation	<ul style="list-style-type: none"> • economy class (return ticket) between international airport in home country and final destination in Canada • original air ticket and boarding passes required as receipts
Winter Clothing allowance	<ul style="list-style-type: none"> • up to \$350, one-time lump sum, no receipts required other than proof funds were given to student
Installation allowance	<ul style="list-style-type: none"> • up to \$600 one-time lump sum, no receipts required other than proof funds were given to student
Monthly living allowance	<ul style="list-style-type: none"> • as determined by the postsecondary institution
Medical plan	<ul style="list-style-type: none"> • health care plan as mandated by the postsecondary institution
Books	<ul style="list-style-type: none"> • \$600/academic year, or \$300/term (+\$50/course for summer session), no receipts required other than proof funds were given to student
Other expenses related to postsecondary program	<p>maximum \$1,500 based on <u>original receipts</u> and can include expenses related to computer purchase, conference participation, Technical and Vocational Education and Training (TVET), and research expenses</p>